

Royal Palm

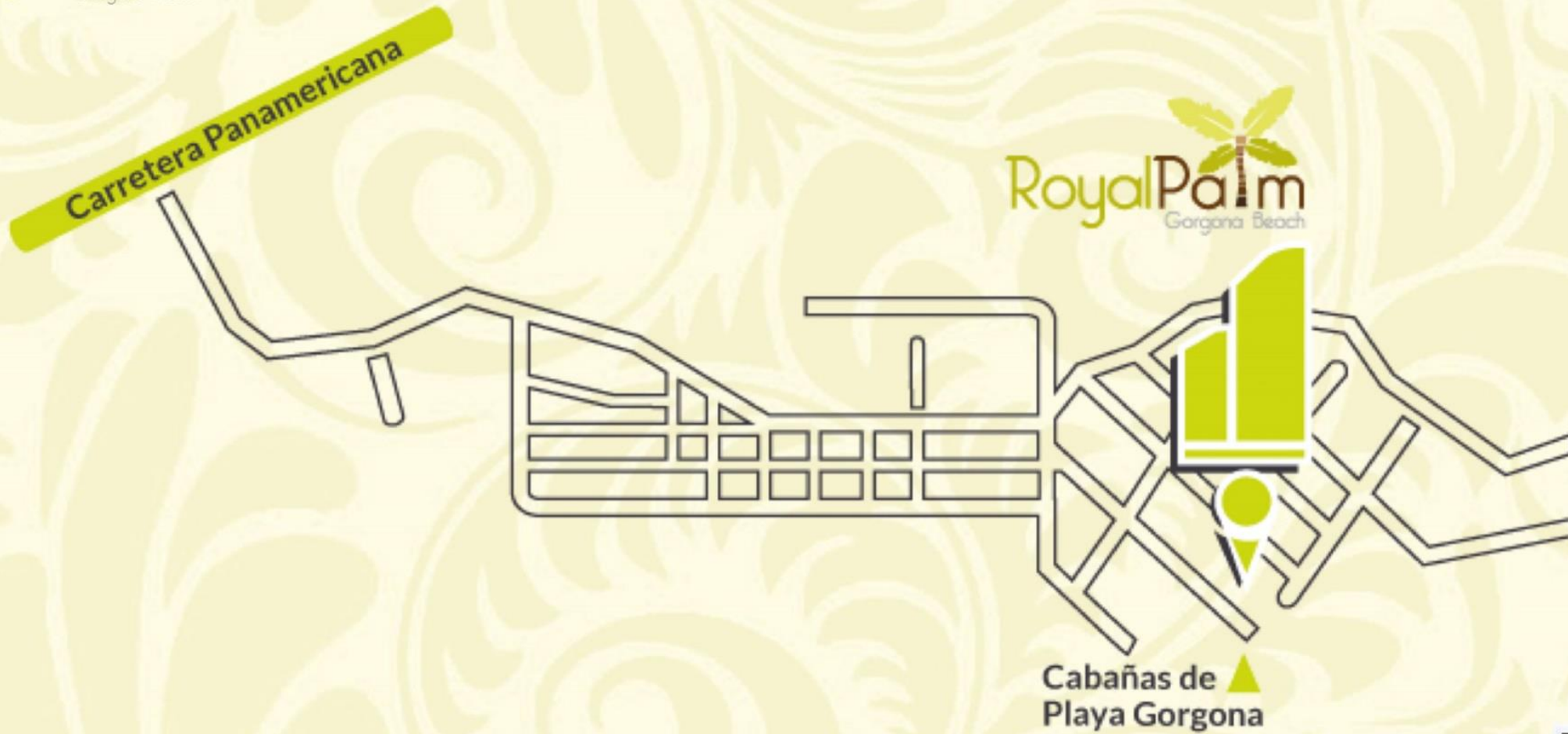
Gorgona Beach



Inspired by the sea, designed for life

RoyalPalm
Gorgona Beach





GORGONA



The project is located in Gorgona beach just minutes from Coronado where you will find schools , hospitals , convenience stores and more.



THE PROJECT



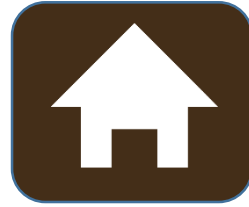
Royal Palm is a waterfront residential project with a seductively innovative design; Located in Playa Gorgona, just 50 minutes From Panama City and minutes from Coronado



Two towers 28 and 21 levels communicated through a central hall



753.47 sq.ft., 1,377.80 sq.ft. and 1,454 sq.ft.

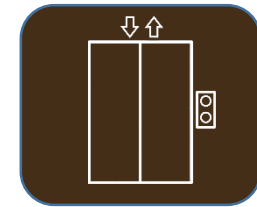


Tower A - six apartments per lever

Tower B - eight apartments per lever



Two and three bedrooms



four principle elevators and one service elevators



THE BUILDING



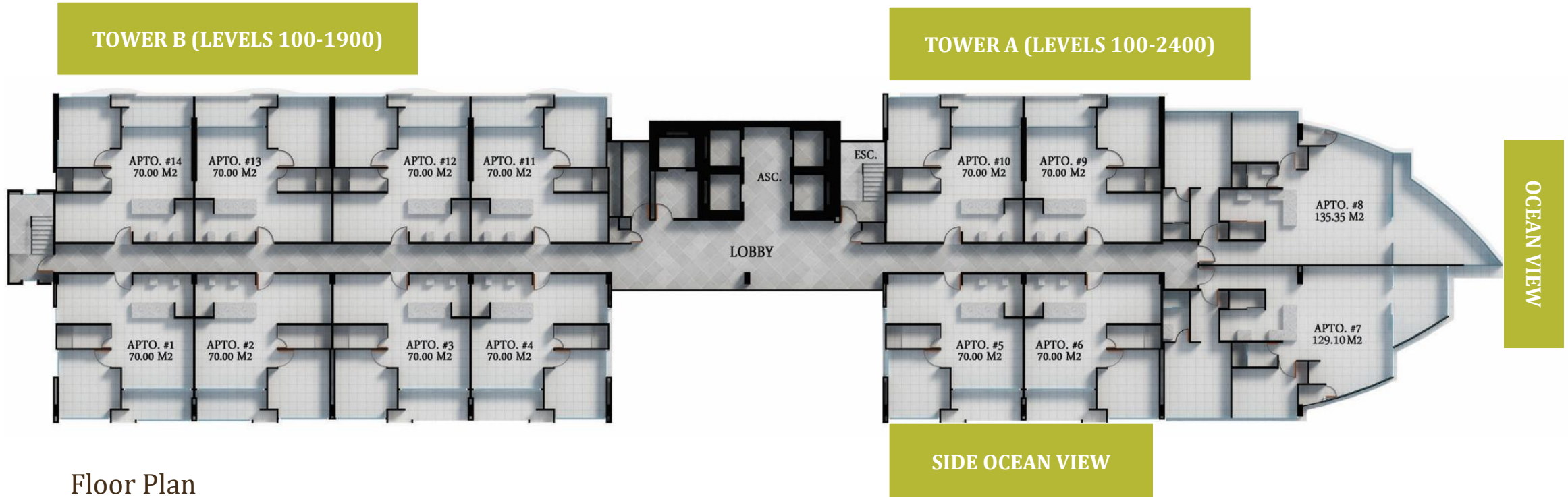
- 24 hour security
- Main lobby with front desk
- Social area in two levels
- Visitor parkings
- Storages



APARTMENTS



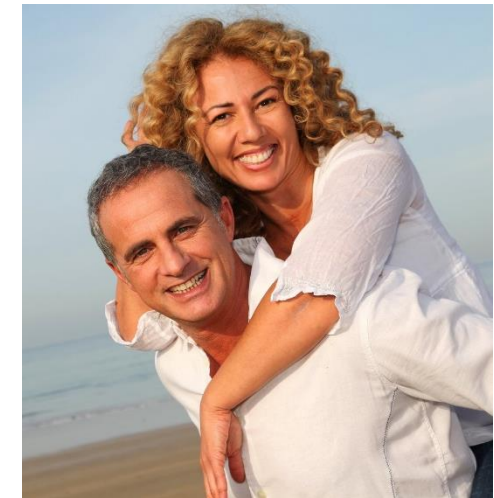
- 753.47 sq.ft., 1,377.80 sq.ft. and 1,454 sq.ft.
- 1 and 2 bedrooms (all apartments of 753.47sq.ft. with possibility of joint them)
- View of the Pacific Ocean (side or front)
- Balcony



APARTMENTS - 753.47 sq.ft.



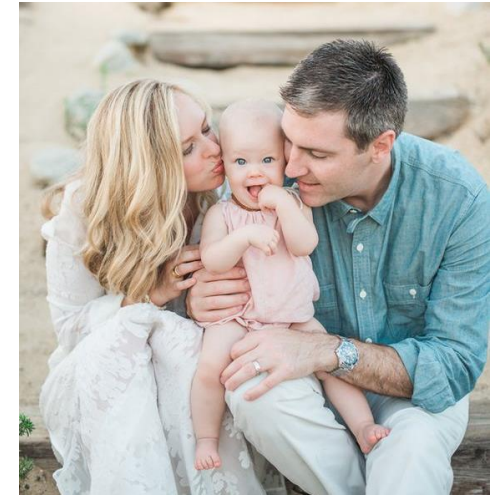
SIDE OCEAN VIEW



APARTMENTS - 1,377.80 sq.ft.



APARTMENTS - 1,454 sq.ft.



AMENITIES



Two social areas:

- In ground level with restaurant, open roof terrace, sunbathing area, bar, infinity pool and direct beach access 4 main lifts, 1 service and ladders.
- In level 300 with multipurpose court (basketball, volleyball, tennis), open bar area, sun deck, gazebos, fitness center, sauna, children's playroom and playground, party room, pool terrace children and infinity pool.



AMENITIES

Floor plan – Level 300





info@empresasbern.com
(507) 214-2376
empresasbern.com
Ave. Balboa, Bayfront Tower



The images contain an artistic representation of the project. The developer reserves the right to make changes without prior notice.