

A stylized tree logo composed of geometric shapes in shades of green, brown, and tan, set against a background of light green and tan geometric shapes.

PORTAVERDE





*An urban paradise with a natural appeal*



PORTAVERDE





# COSTA DEL ESTE

---



PORTAVERDE

## *A luxury project in an exclusive location*

Costa del Este is an exclusive area of real estate development in Panama City located in Juan Diaz, near Parque Lefevre. It was designed with high quality standards, completely underground wiring, residential areas with private access, separate wastewater processing plant, among others.



4 Schools



3 Religious  
Temples



18 Shopping  
Plazas

# LOCATION



PORTAVERDE

## COSTA DEL ESTE

A prime location overlooking the park and just steps away from the future luxury mall Towncenter.



# THE PROJECT

---



PORTAVERDE

*A place inspired by the tranquility and harmony of living close to nature*

Portaverde is a residential tower located in the prestigious area of Costa del Este, with the privilege of living in front of the park. An urban paradise that invites you to enjoy the natural appeal of this exclusive area.



38 story tower,  
29 apartment  
levels



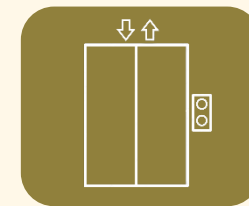
1905sq.ft



Four  
apartments  
per level



Three  
bedrooms



Four  
elevators

# THE BUILDING

---



PORTAVERDE



- Full auxiliary power plant
- Reserve water tank
- 24hr security
- Visitor parking
- Social area on the 5th level

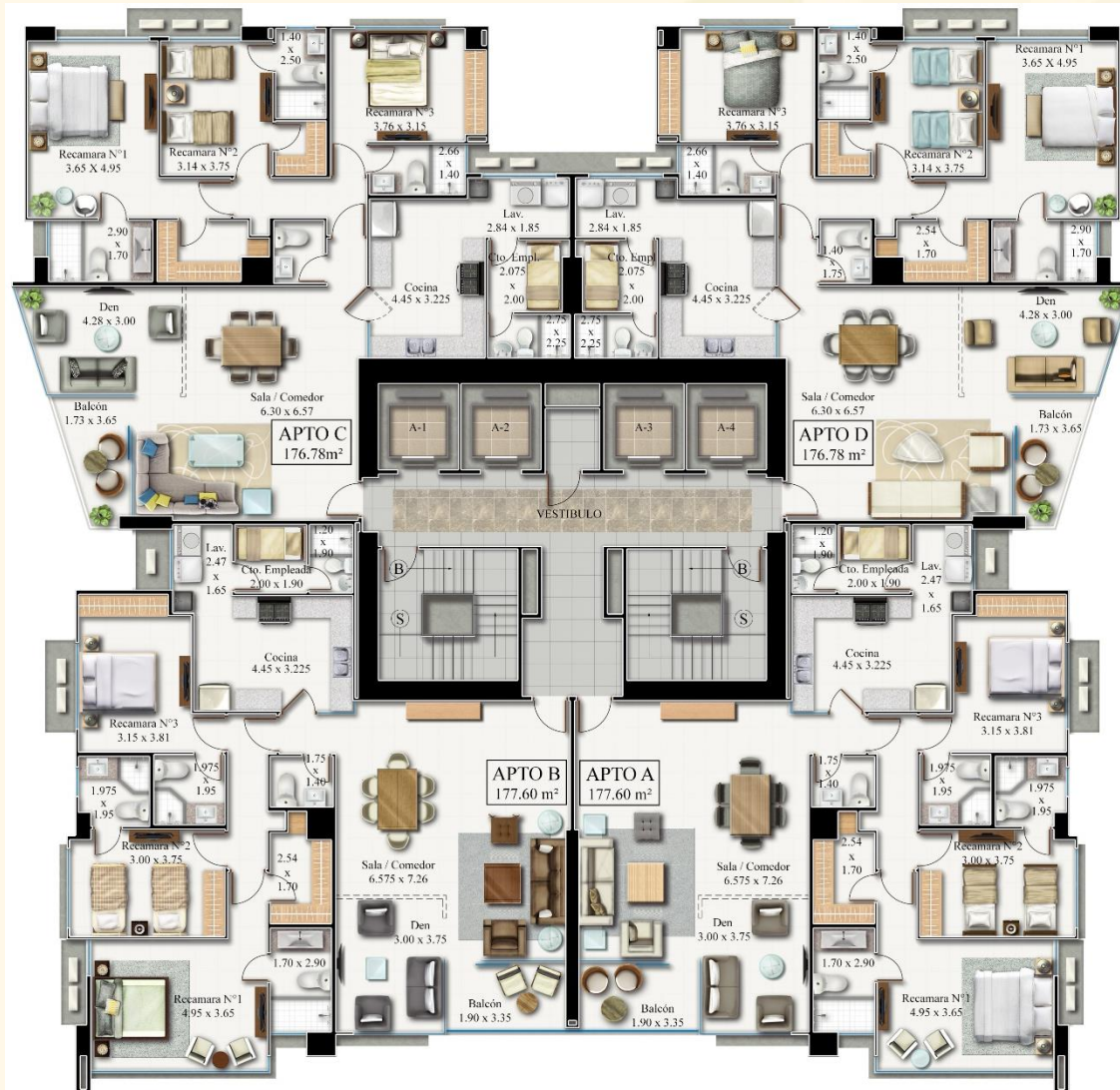


# APARTAMENTS



PORTAVERDE

View to Towncenter



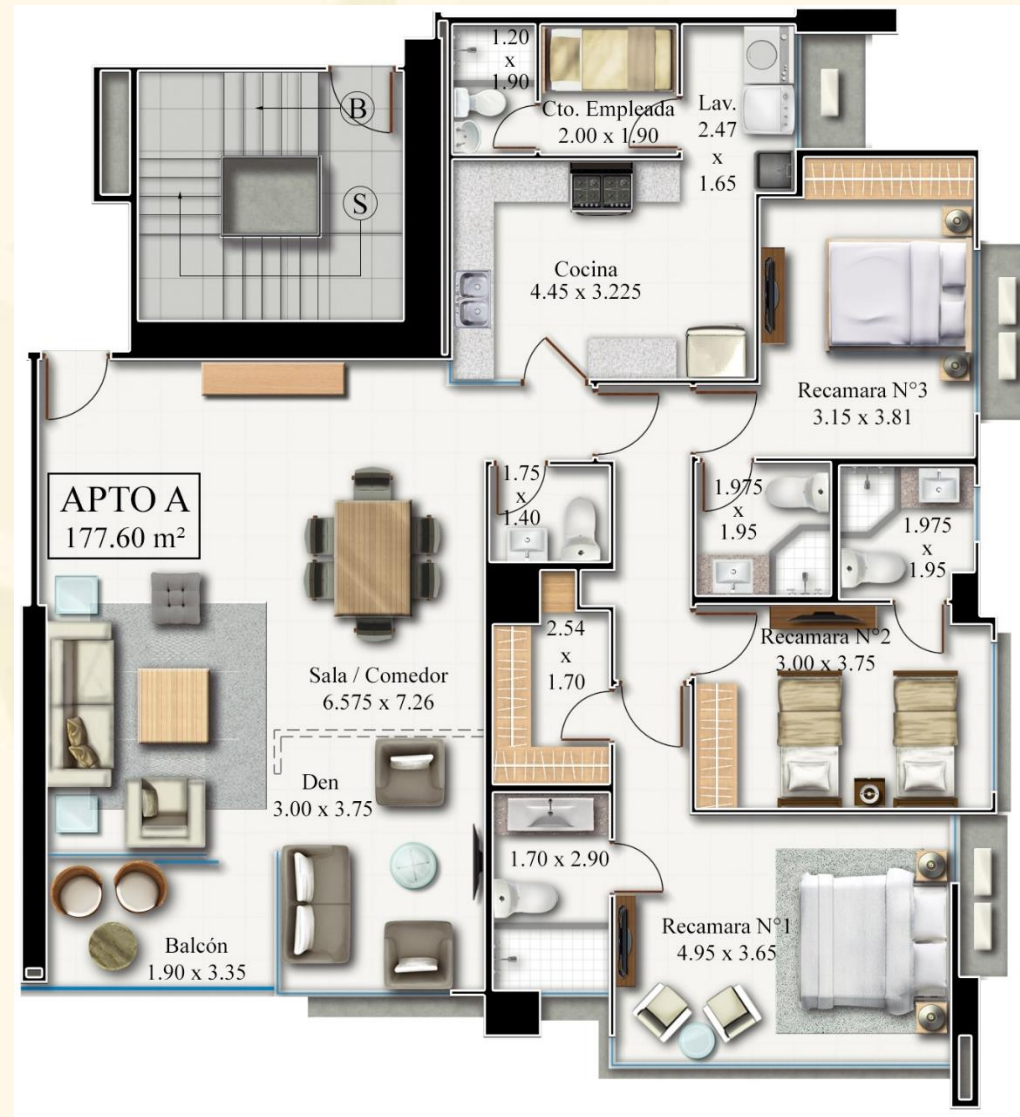
View to the park

- 1905sq.ft apartments with three bedrooms
- Living Room
- Dining Room
- Open Den
- Balcony
- Comfortable Kitchen
- Guest restroom
- Laundry
- Maid's quarter with bathroom

# MODEL A - 1911sq.ft



PORTAVERDE



View to the park



# MODEL B - 1911sq.ft



PORTAVERDE



View to the park

# MODEL C - 1903sq.ft



PORTAVERDE

View to Towncenter



# MODEL D - 1903sq.ft

View to Towncenter



PORTAVERDE









# AMENITIES



PORTAVERDE

Social area located on the 5th level

- Jacuzzi
- Family and children's pool
- Sundeck
- Ballroom
- Game room
- Playground
- Kitchen and BBQ
- Open and covered terraces
- Sauna
- Gym









# BENEFITS

---



PORTAVERDE

TownCenter Costa del Este, is located a few blocks away from Portaverde. The future shopping center will be the perfect mix between urban pleasures and community life. A social destination that will offer a range of amenities and services; including shopping, restaurants, entertainment, film, social hub, hotel, clinics and Hospital HPP Costa del Este.



info@empresasbern.com  
(507) 214-2376  
empresasbern.com  
Ave. Balboa, Bayfront Tower

