



2016

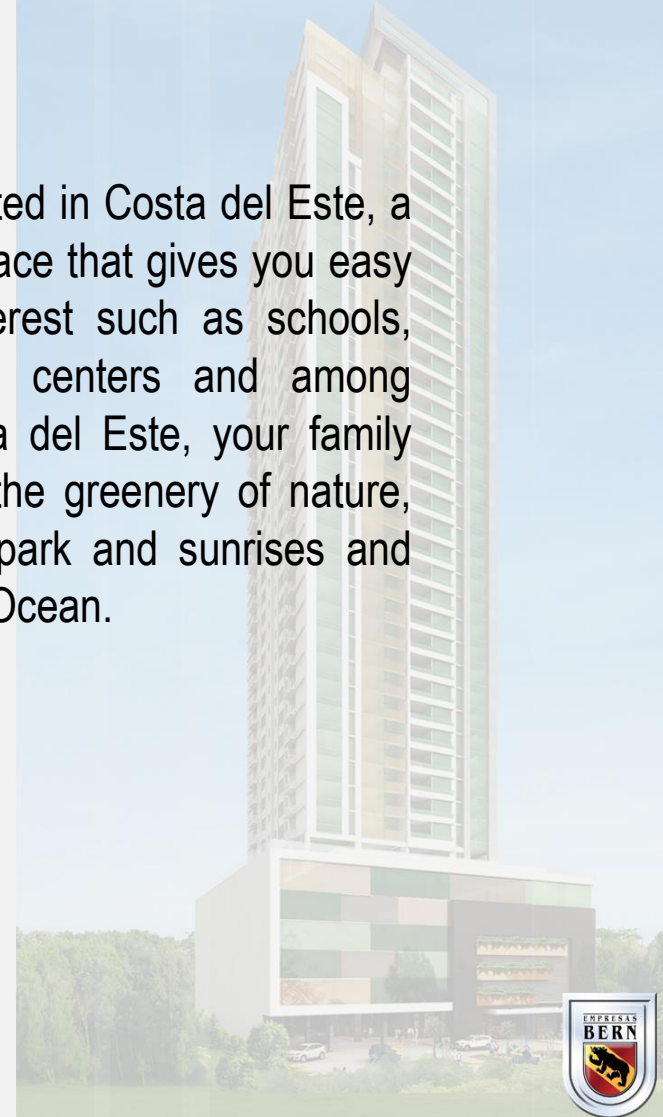


The Building

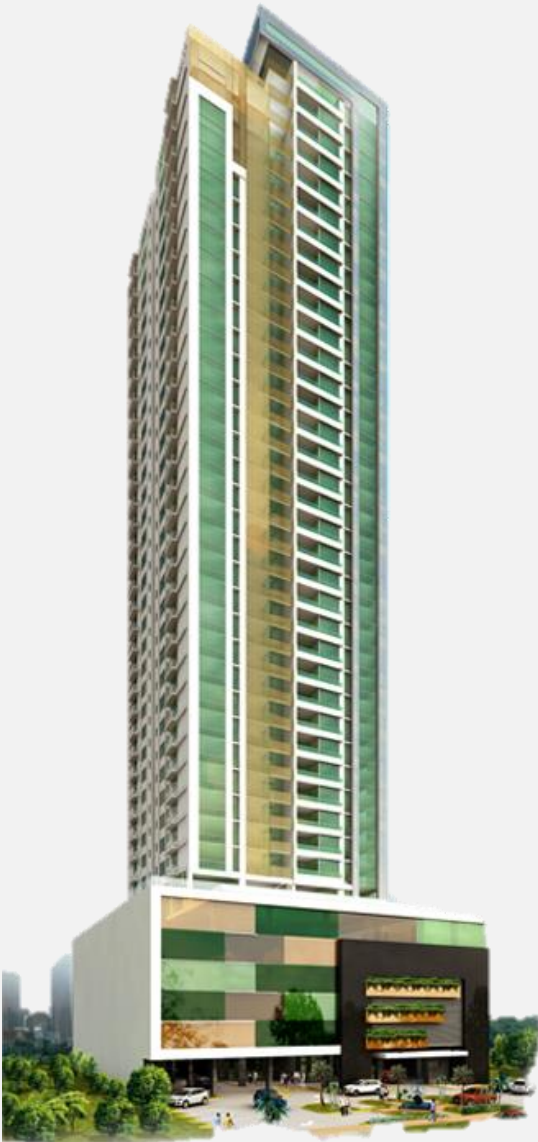


It is a family project located in Costa del Este, a modern and exclusive place that gives you easy access to points of interest such as schools, supermarkets, shopping centers and among others. In Mirador Costa del Este, your family will enjoy every day of the greenery of nature, overlooking the central park and sunrises and sunsets over the Pacific Ocean.


MIRADOR
COSTA DEL ESTE



The Building



- 42 levels high rise with 33 apartment floors of 2,153 sq.ft. per apartment
- 5 parking levels
- 4 apartments per level
- 4 high speed passenger elevators
- One cargo/service elevator
- Full auxiliary power plant
- Fire sprinklers
- Water reserve tank with pumping system
- Double paned glass windows (thermal and acoustic insulation for energy saving)
- Storage deposits available
- 24 hour security

**MIRADOR**
COSTA DEL ESTE



The Apartments

- Master bedroom with full bathroom and walk-in closet
- 2 secondary bedrooms with bathroom, one with walk-in closet, the other with lineal closet
- Open area for den, study or family room
- Living room
- Dining room
- Semi open kitchen with breakfast area (can be closed off)
- Guest bathroom
- Maid's quarter with bathroom



The Apartments

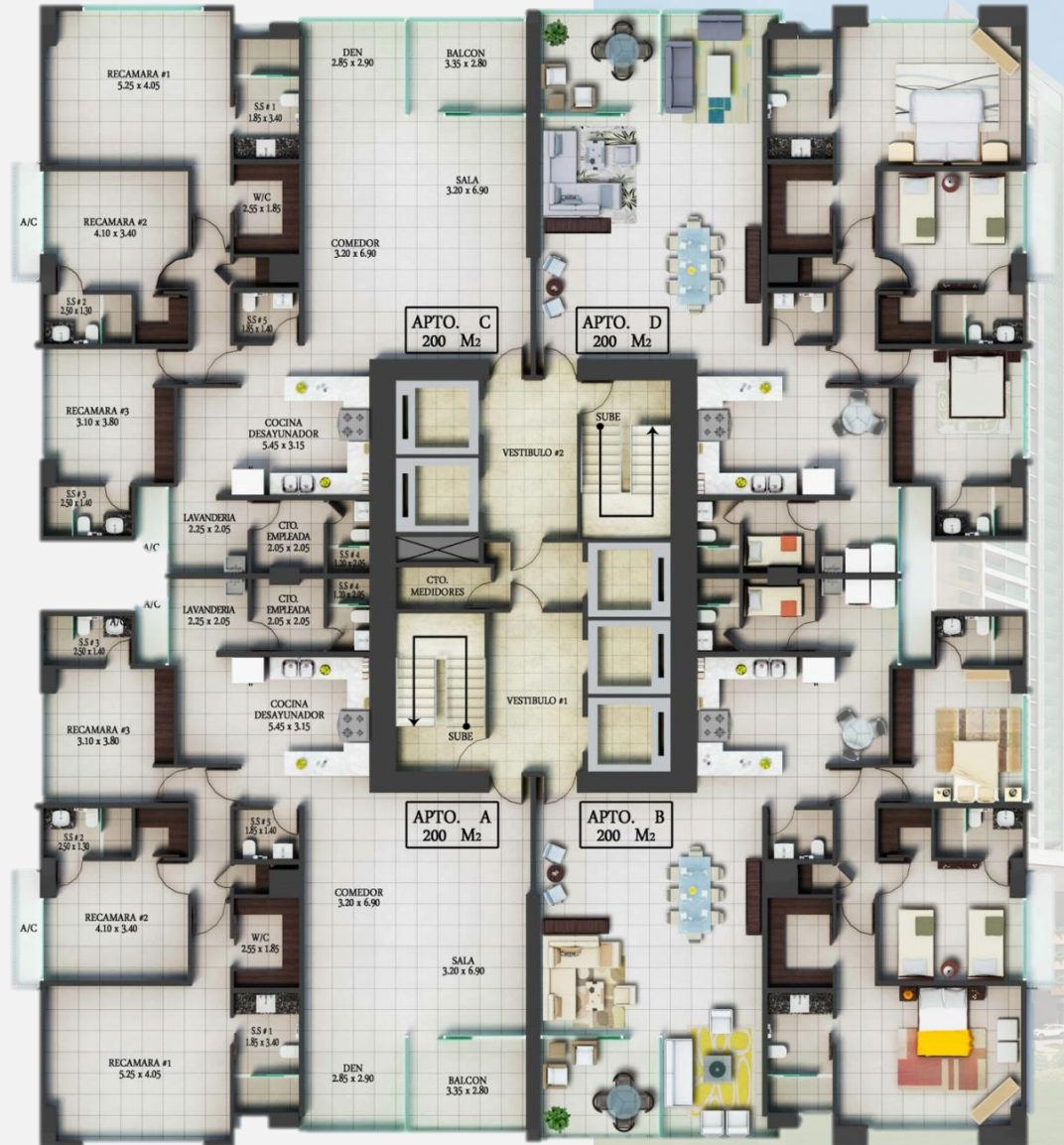
MIRADOR
COSTA DEL ESTE



Floor Plan

Costa del Este Central
Park view

Ocean / Boulevard view

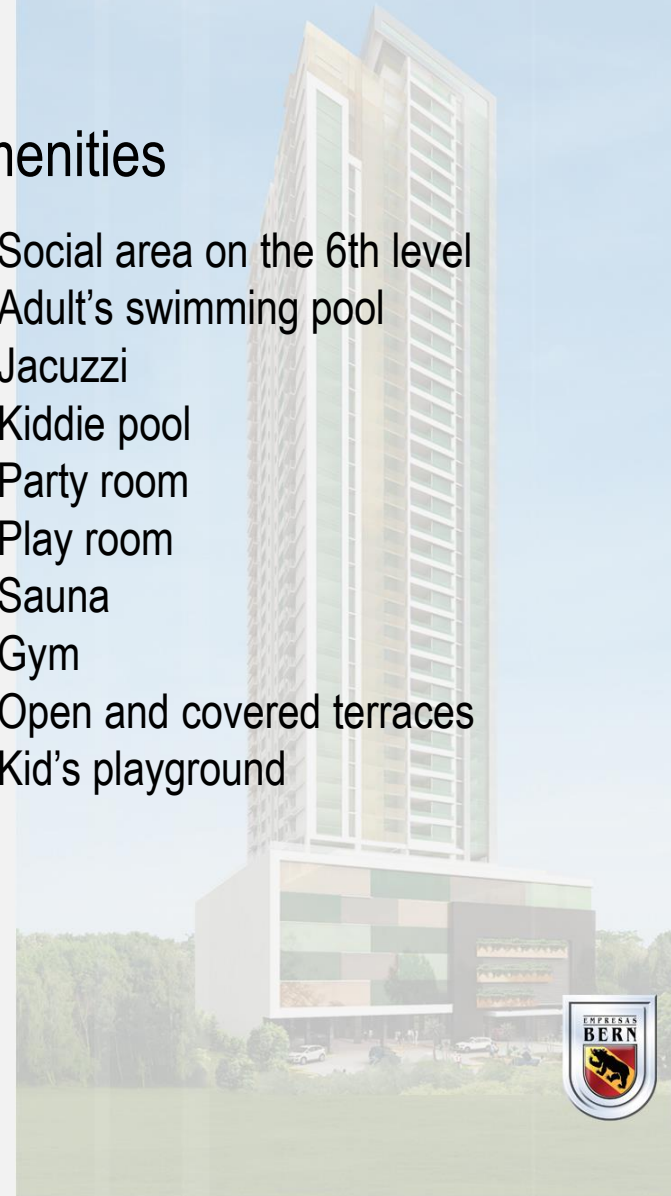


Social Area



Amenities

- Social area on the 6th level
- Adult's swimming pool
- Jacuzzi
- Kiddie pool
- Party room
- Play room
- Sauna
- Gym
- Open and covered terraces
- Kid's playground



Location





empresasbern.com
(507) 214-2376
Ave. Balboa, Bayfront Tower

*Welcome to Mirador,
a warm, stylish atmosphere for the family today!*

